

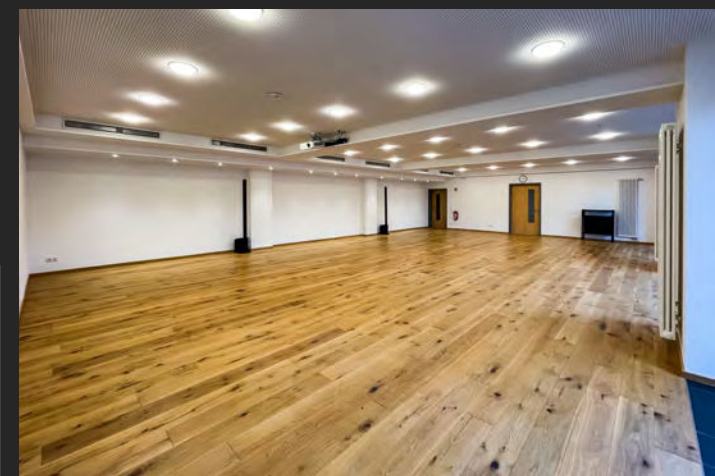
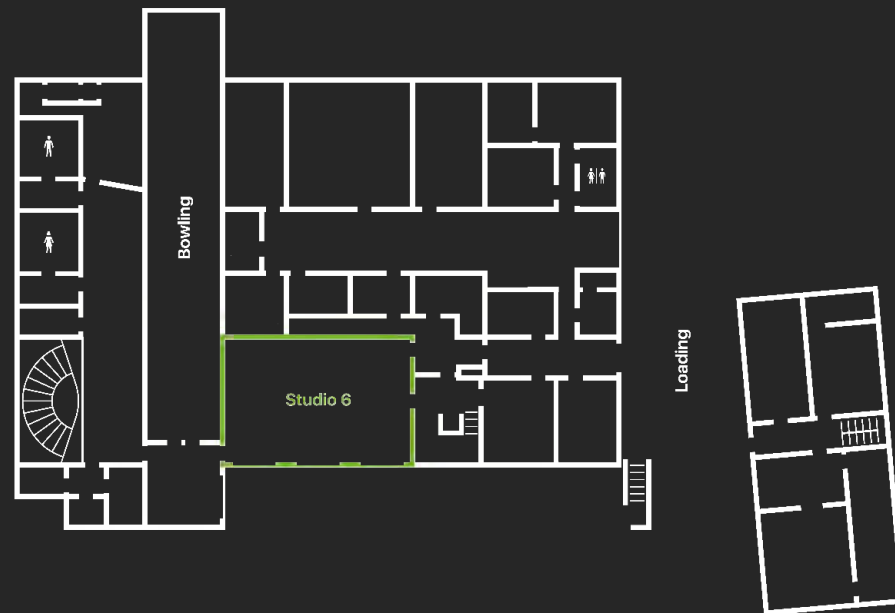
Studio 6

SOUS-TERRAIN

108 m² (1,162,5 sq ft)

13,2 m x 8,2 m (43.3 x 26,9 ft)

Hight 2,75 m (9 ft)



Specifications

- Sous-terrain with separate entrance, foyer with bar area
- Heated studio
- High-speed Internet: LAN and wireless LAN
- mirror wall for dancing, rehearsal and choreography
- Elevator access
- Heated studio

